



Leman Street

Project Type: Hospitality

The Pinnacle Team were contracted to provide the Design & Build Mechanical Works for the creation of a 262 Bedroom serviced apartment building on the edge of the City of London.

Built to provide both tourists and long stay business travellers with a high quality accommodation with the luxuries they would expect at home, whilst being only a 5 minute walk from the Lloyds of London Building.

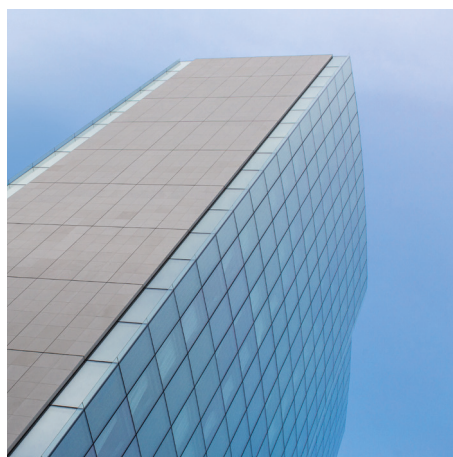
Our teams works included the design and build of the following services:-

Gas
Energy Centre
Chilled Water

Wet Riser
Dry Riser
Sprinklers

Domestic Water
Ventilation
Sanitaryware

The project was the first entry into the UK market for the building owner, Locke Living, but has provided the template for multiple more similar schemes across London.



Please contact us today at:

info@pinnaclemep.com

or call: Tel: 01959 546750



Scan to book a meeting



Scan for Business card